

QUALITY FEED WELL DESERVED

IS YOUR HORSE/PONY 15 YEARS OR OVER AND WOULD YOU LIKE THE CHANCE TO TRY A WHOLE NEW REALM OF CLASSES AND EVEN COMPETE AT OLYMPIA?

Veteran Horse Showing stages the Grand Final of its showing series at the prestigious London Olympia horse show in December. All the information you may need such as show dates, results, applications for hosting, qualifiers and much more can be found on our website www.veteran-horse-showing.co.uk

E-Mail: veteranhorseshowing@hotmail.co.uk
Tel: 01782 503 526

The only choice for your veteran.

Dodson & Horrell feeds and herbal products are designed to provide everything your veteran horse needs and deserves for those later years in life, helping you ensure he gets the best you can give.

www.dodsonandhorrell.com

DODSON & HORRELL LIMITED

Official supplier of nutrition to the British Equestrian Team.

If it's coloured, we've got it covered!

CHAPS uk.com

Memberships, Registrations, Passports, Gradings, Foal Futurity, Covering Certificates, Show Affiliations, Junior Bursary, Judges' Panel, Journals . . .

Everything for the Coloured enthusiast!

Championship Show: 2/3/4 Sept '11, Arena UK.

www.chapsuk.com



The London Riding Horse Parade & Horse Show 2011

The Dorchester
Park Lane, London W1K 1QA
www.dorchestercollection.com

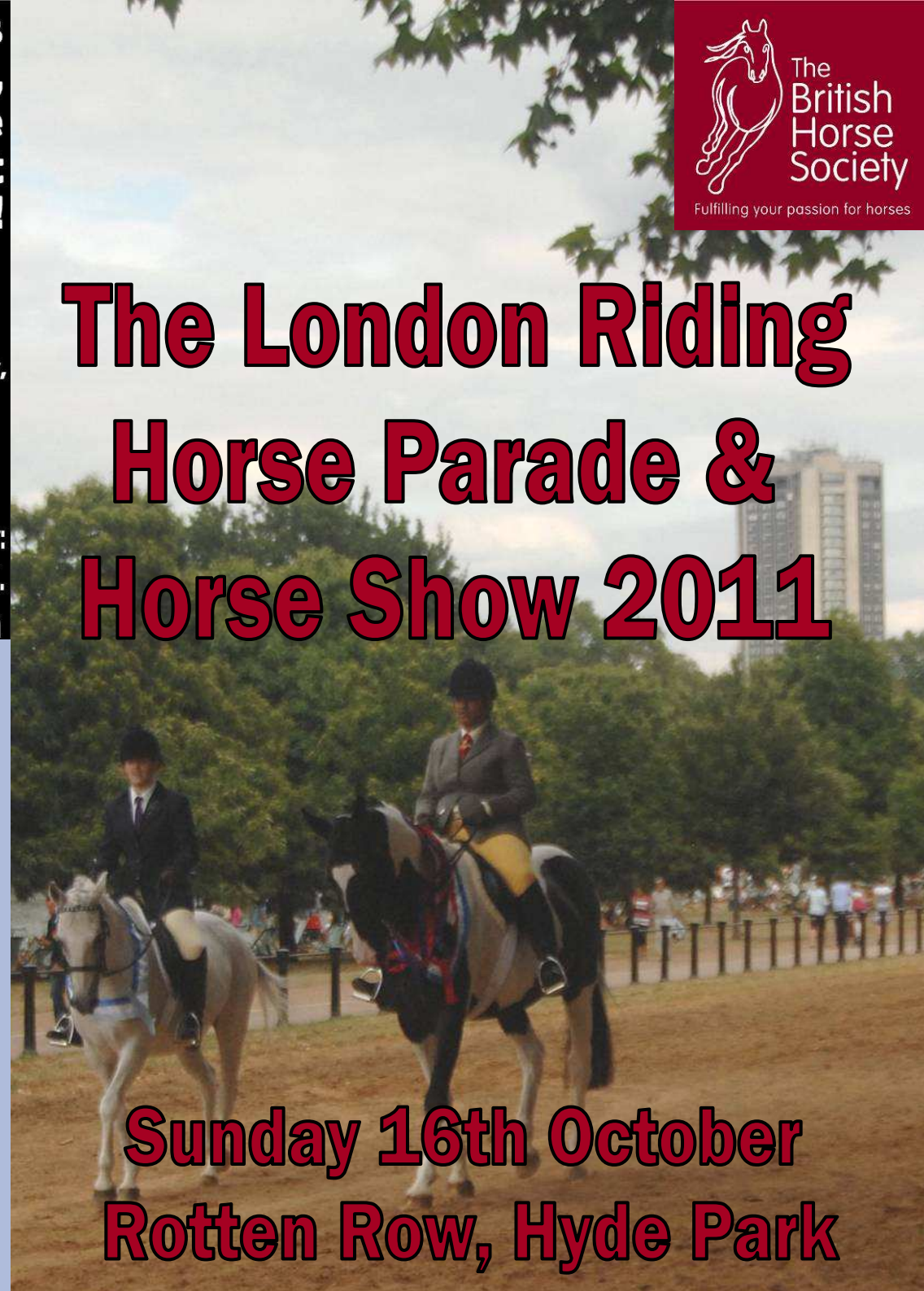


The Side Saddle Association

Most horses & ponies take very well to side saddle and enjoy showing off their new found skill!

For more information contact the Side Saddle Association on 02476 545555.

www.sidesaddleassociation.co.uk



Sunday 16th October
Rotten Row, Hyde Park

Every month,

Follow us on: 

Localrider MAGAZINE

has Local ...

**News, Results,
Features, Show Reports
... And much more!**

www.localrider.co.uk
01892 863062, info@localrider.co.uk



Join us and get

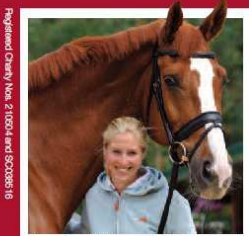
THREE MONTHS FREE!

12 MONTHS FOR THE PRICE OF 9** (Quote 3FT1)

Our equestrian heroes support the charitable work of the BHS across safety, welfare and access. In return, they appreciate the wealth of benefits they receive as members. Join us today to start enjoying the same exclusive benefits, while helping us in our work, and we will give you three months for free!

Joining us will give you peace of mind every time you ride, with our insurance* cover along with many other membership benefits. These include free and comprehensive equine and legal advice, bi-monthly magazine and exclusive member offers.

Start benefiting TODAY by calling **08450 777725** or visit www.bhs.org.uk



Laura Bechtolshelmer, World number two and Britain's number one dressage rider



Lee Pearson CBE, triple gold medalist at the last three Paralympic Games



Mary King, Olympic equestrian eventing medalist Emily King, shares her mother's eventing passion



Martin Clunes, BHS President

Fulfilling your passion for horses

* Insurance is only activated when you become a Gold member of the BHS and you have paid your membership subscription. Terms, conditions and territorial limits apply.

** Offer cannot be used in conjunction with any other offer and is for new members only. Offer subject to change at any time. The British Horse Society is an Appointed Representative of South Essex Insurance Brokers Ltd who are authorised and regulated by the Financial Services Authority.

Low Emission Zone



If you are planning to drive your horsebox to the London Riding Horse Parade please be aware that Hyde Park is within the in the Low Emission Zone (LEZ).

If your horsebox weighs in excess of 3.5 tonnes you will need to pay a daily charge unless it meets certain emissions standards.

Your vehicle will meet the current emissions standards if:

- It was first registered as new on or after **1 October 2001**
- You have a valid Low Emissions Certificate (LEC) or a Reduced Pollution Certificate (RPC) for fitting an approved partial or full filter, or converting to an approved gas engine

The LEZ does not affect 4x4's, horse trailers or any vehicle under 3.5 tonnes at present.

If you are unsure please check on the Transport for London website at www.tfl.gov.uk where you can check your vehicle and find out more information.

Please do not confuse the LEZ with the Congestion Charge.

The Central London Congestion Charging only operates Monday to Friday 7am to 6pm so will not affect anyone driving to the show.



Chiltern Equine Clinic



Affordable Veterinary Care for all

- Routine Visits • Free visit zones • Microchipping • Dentistry (Routine and Advanced) • Lameness Investigations • Medical Investigations • In-House Specialists • Digital Radiography & Ultrasound Suite All Clinics • Portable Digital Radiography with instant X-rays on site • Portable Ultrasound • Video Endoscopy • Video Gastroscopy • Full Surgical Facilities • BEVA Accredited

Bury Farm
Slapton
Beds, LU7 9BT
Tel: 01525

Model Farm
Chalfont St Giles
Bucks, HP8 4AB
Tel: 01494 876555

Widmer Farm
Lacey Green
Bucks, HP27 0PG
Tel: 01844 273888

Blueberry Farm
Warfield
Berks, RG42 6JL
Opening

www.chilternequine.com



RULES OF ENTRY

NO ENTRIES WILL BE ACCEPTED AFTER THE CLOSING DATE. Entries are limited please enter early.

It shall be a condition of entry that all competitors (or their guardians) agree to abide by the rules. Only fully completed and signed entry forms will be accepted. Only horses/ponies with entries paid in advance will be permitted to attend the event. All entrants on arrival to show must report immediately to secretary's tent for their starting time and judging card for Classes 1 & 2 and to familiarise themselves with starting and judging areas.

Competitors must observe all park regulations, in particular they are reminded to keep to the bridleways at all times. No vehicles or horses are allowed to be driven, ridden or grazed on any grassed area including the meadowland adjacent to the horse track. Riders must stay at walk in the horsebox area and should be observant and courteous to pedestrians crossing the horse track. Dogs must be kept on leads at all times. Manure, straw or rubbish must not be left in the park. Horses/ponies must not be ridden or lead on the tarmac footpaths.

Entry Fees cannot be refunded under any circumstances.

Competitors asked by the Judge to ride an individual show must limit their display to a maximum of 90 seconds.

First ridden and lead rein will not be permitted to join the Grand Parade around the park. Manners of horses and ponies will be taken into consideration during the judging and any mount deemed unsuitable will not be permitted to join the Grand Parade.

All registration numbers of horseboxes/trailer vehicles must be written onto entry sheets. Only pre-registered horse transport will be issued with box passes and only those with their passes clearly displayed will be permitted to enter Hyde Park.

No boxes shall leave the area until the end of the event unless special permission is granted by the Parade Director when a Steward will safely escort them from the sand track. Vehicles must leave the Park by 5.45pm

Horses/ponies must not be left unattended at their boxes. Please bring adequate water for your animals as there is none available on site. No horses to be tied to vehicles. Owners/competitors must clean up after their horse and must not leave any droppings behind when leaving the Row..

No cars (unless towing horse trailers) are permitted to park or unload anywhere near the event. There is major security in operation for all vehicles and you are strongly advised to leave cars at home. There is limited meter parking around the Park (currently £1.20 per hour until 6.30 pm but please check meters on the day).

The parade officials and judges decisions are final. Judges and officials shown on the schedule may not necessarily be in attendance on the day of the show. In the interest of health and safety, the 'Grand Parade' is subject to the availability of police escorts on the day.

No horse/pony under the age of four may compete. Please use a green ribbon for a novice or nervous horse and a red ribbon for a horse likely to kick or buck. To be placed on the tail. All classes are for mounted competitors.

Competitors must enter using one entry form per rider, all sections must be completed. Horse/ponies/riders may enter any class once only. Minimum entry fee is £32. Classes 1 or 2 and classes 3 or 4 or 5 are compulsory. Classes 6, 7, 8 & 9 are optional.

CORRECT HEADGEAR MUST BE WORN AT ALL TIMES WHILST MOUNTED AND MUST CONFORM TO THE LATEST APPROVED BRITISH SAFETY STANDARDS, INCLUDING THOSE WEARING SIDE-SADDLE ATTIRE. Riders are respectfully reminded that to conform to these standards their chin straps should be correctly fastened.

Riders should wear their numbers on their back. Riders must not ride more than two abreast at any time.

All exhibitors please note that they will be responsible for fees and medicine, if required, supplied by any attending veterinary surgeon.

The London Riding Horse Parade dates back to 1938 and 1939 when competitions were held in Hyde Park with the objective of raising the standard of turnout of riders in Rotten Row. However, the outbreak of WW2 halted the competition and it was not until 1965 that this condition and turnout competition was re-established.

There were 104 entries in the 1965 competition and the event has taken place every year since with a record breaking 134 entries in 1973!

The event has been successfully run by committee under the auspices of the London Region of the British Horse Society since 1994.

Historically, the parade has always taken place on the first Sunday in August. However, the changing face of equestrianism in London has meant that entries have dwindled over the years – many of the horses and riders who would have traditionally taken part in the parade are on holiday during July and August. After discussion with the Royal Parks a new date for 2011 was secured and the Parade will take place for the very first time in October.

The Parade now assesses the health, well-being and turnout of the horse as well the rider and competitors are encouraged to wear smart riding attire which compliments their particular horse. The event was originally open to riders who stabled their horses within a 15 mile radius of Hyde Park but today the event is open to all.

The immense cost of running such an event in a Royal Park could never be passed on wholly to the entrants; therefore a huge thank you must go to our many sponsors.

The London Riding Horse Parade is run wholly by volunteers and a special mention must also go to these dedicated people without whom the show could not go ahead.



2010 Supreme Champion Leona Osbourne riding Cossi fan Tutte being presented with the Supreme Champion trophy by Joyce Bellamy, president of the LRHP.

President	Joyce Bellamy MBE
Vice President	Brendan Byrne
Show Director	Claire McCaffery-Clarke
Parade Officials	Brendan Byrne (entries), John & Pat Cooper, Mary McCorry, Liz Coulson, Fay Davie, Christian Bassett
Commentator	Donald Kear, BHSI
Vet Judge	Kate Gray : Chiltern Equine Clinic
Farrier Judges	King's Troop
Show Judges	Freda & Lucy Fisher
Paramedic	Lynn Halbert
Hospitality	Janet Coe
Parade Escort	Metropolitan Police
Webmaster	Carole West
Photographer	Peter Cox (www.petercox-photography.co.uk)

Entries Secretary Brendan Byrne,
10A The Pavement,
Chapel Road, London,

**ENTRIES CLOSE ON 30th SEPTEMBER 2011
STRICTLY NO LATE ENTRIES**

SCHEDULE OF CLASSES

**It is a condition of entry that all those attending the event enter two classes:
Class 1 or Class 2 AND either Class 3 or Class 4 or Class 5.**

ENTRY FEE IS £32 including First Aid FOR TWO CLASSES (NOT £32 EACH)

Classes 1 and 2 are judged individually by a Vet, a Farrier and a Turnout Judge. Entrants require a judging card and a starting time for these classes and should report to the Secretary's Area with their numbers (which are sent out with Horse Box passes) immediately upon arrival. The Secretary's Area will be in the PA Caravan from 9.30.

Classes 3, 4 and 5 are judged as a class in Ring One. These classes will start promptly and will not coincide with individual's starting times for Classes 1 & 2. These classes will be judged on the condition of the horse or pony and are ridden classes.

Classes 6, 7, 8 & 9 are optional classes to be held in Ring One.

There will be a sash presented to the winner of each class and rosettes from 1-6th place.

A special rosette will be awarded to the highest placed BHS Member in each class.

It is a condition of entry that all participants agree to abide by the rules on the last page of this schedule.

PARADE RING - Condition and Turnout Classes

11.00 prompt CLASS 1 ADULT Assessment

CLASS 2 YOUNG RIDERS Assessment (18 years and under)

These classes have been kindly supported by The Kings Troop Farriers and Chiltern Equine Clinic. The above two classes run simultaneously.

RING ONE

11.00 CLASS 3 RIDDEN PONY- Ponies 14.2hh or UNDER
To include lead-rein (handler will be judged as part of the overall picture with regards to turnout)

To follow **CLASS 4 RIDDEN HORSE - Horses OVER 14.2hh**
Kindly sponsored by Local Rider Magazine

To follow **CLASS 5 RIDING SCHOOL HORSE/PONY**
Open to any horse/pony that is regularly used in a riding school.
Sponsored by The British Horse Society London Region

RING ONE (cont)

Entry Fee

To follow **CLASS 6 VETERAN - Horse/Ponies 16 yrs & over** £7.00
Veteran Shield presented to winner
Kindly supported by The Veteran Horse Society

To follow **CLASS 7 COLOURED HORSE/PONY** £7.00
To include Duns, Roans, Palominos etc.
Kindly supported by CHAPS (Coloured Horse & Pony Society)

To follow **CLASS 8 SIDE SADDLE** £7.00
Kindly supported by the Side Saddle Association

To follow **CLASS 9 NOVELTY FUN CLASS!** £5.00
"Horse/Pony Judge would most like to ride
along Rotten Row"
Open to any horse/pony
Sponsored by the British Horse Society London Region

To follow **Presentation of rosettes to those placed in CLASSES 1 & 2**

To follow **SUPREME CHAMPIONSHIP CLASS**
Open to those placed 1st in each class
The Southern Equestrian Agency Perpetual Challenge Shield presented to the Supreme Champion.
This class has been kindly sponsored by Marilyn Hawley.
Afternoon tea for two has been generously donated by The Dorchester, Park Lane as a prize for the winner.

3.00 pm GRAND PARADE - ROTTEN ROW

All competitors to parade along Rotten Row escorted by mounted officers of the Metropolitan Police.

ENQUIRIES

Claire McCaffery-Clarke : Show Director

01323 639920 } office hours
07808 141073 } 8.30 : 17.00
claire.mc@bhs.org.uk

**For a full show report and to view all photo's taken by Peter Cox
please visit the London Riding Horse Parade website at
www.london-riding-horse-parade.org.uk**

**A report will also be published in Local Rider Magazine
www.localrider.co.uk**